

Diva ISDN Adapter Configuration Instructions for TracPhone[®] F55/F77

These instructions explain how to configure the following Diva ISDN adapters for TracPhone F55/F77 operation:

ISDN Adapter	KVH P/N
PCI Card	19-0357
PCI Card, Low-profile	19-0356
PCMCIA Card	19-0354
USB Adapter	19-0355

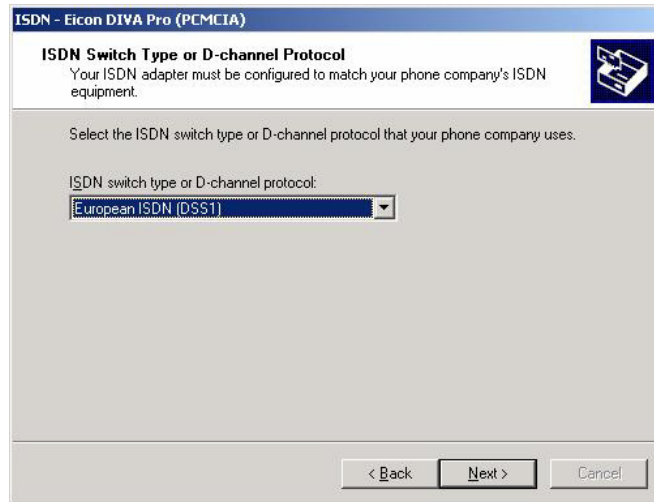


The Diva ISDN adapters are not manufactured by KVH and are not covered under KVH's warranty.

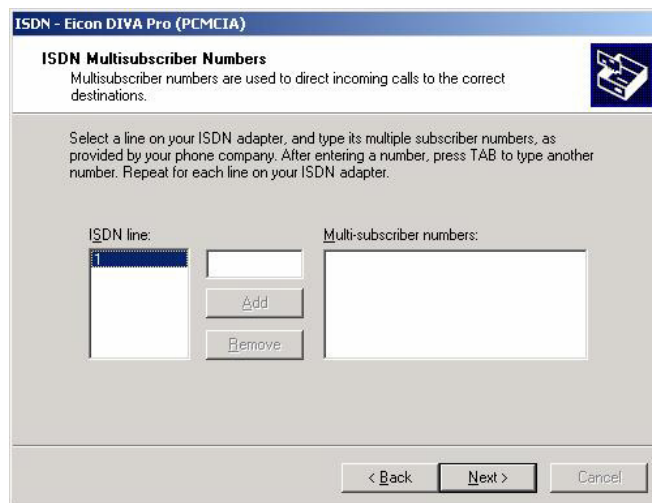
These instructions apply to a computer running Windows[®] 2000 or XP.

Hardware Setup

1. Follow the supplied Diva instructions to install the ISDN adapter.
2. Once you've installed the adapter, your PC will automatically detect the new device and launch the Installation Wizard. Click the **Next** button when prompted.
3. Select "European ISDN (DSS1)" then click the **Next** button.



4. Leave the "Multi-subscriber numbers" box empty and click the **Next** button. This completes the hardware setup.



Software Setup

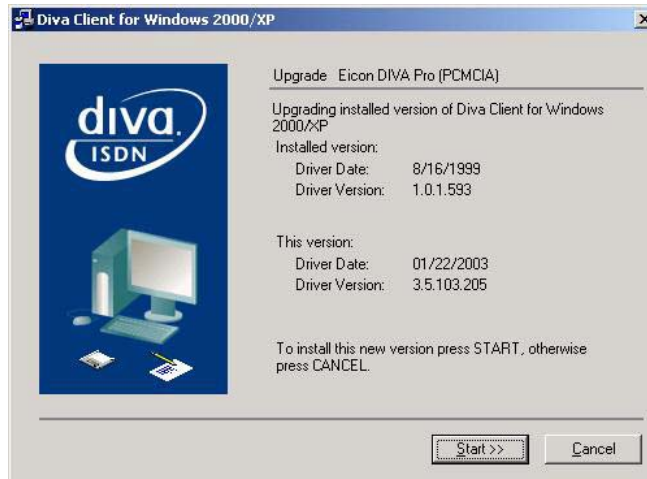
1. Insert the supplied Diva CD into your PC. The software installation wizard starts automatically.
2. Click the **Installation** button.



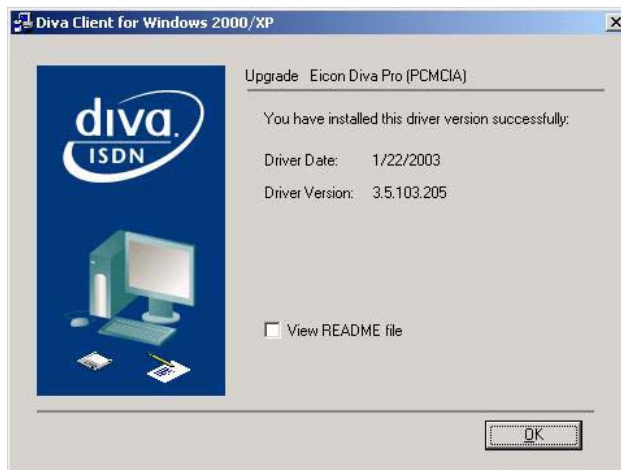
3. Click the **Update Diva Software for Windows 2000/XP** link.



4. Click the **Start** button.



5. Once the upgrade is complete, click the **OK** button.



6. Click the **Yes** button to restart your PC. This completes the software setup.

