



# IRIDIUM DIAL-UP

---

## Configuration

(Mac OS X)

1	Overview.....	2
2	Modem Driver Installation and Configuration .....	2
	2.1 IMPORTANT CONSIDERATIONS.....	2
	2.2 NETWORK SETUP .....	3
3	Dialing a Call.....	9



Remote Satellite Systems  
1455 N. Dutton Ave., Ste. A, Santa Rosa, CA 95401  
(707) 545-8199 [www.remotesatellite.com](http://www.remotesatellite.com)

---

## **1 Overview**

Iridium's Direct Internet 2.0 Data Service allows customers to connect directly to the Internet via the Iridium gateway. While users are not required to load any special software onto their computer to connect, they will find additional compression and speed benefits from installing the Direct Internet 2.0 accelerator. Though only machines running Windows are supported, this document should provide some basic information on how to configure machines running Mac operating system OS X.

## **2 Modem Driver Installation and Configuration**

Prior to using your Iridium phone for Direct Internet 2.0, you must do the following:

- Install a valid serial port adapter
- Install a valid modem script on your computer.
- Set up and configure a PPP networking connection

### **2.1 Important Considerations**

- Though several USB to serial adapters may work, we have tested the Keyspan Hi-speed USB 2.0 serial adapter (model USA-19QW) and found this to provide a reliable serial port solution.
- Unfortunately Iridium does not directly support the Mac platform and therefore no official modem script is available. In order to create a working connection, the user must provide their own modem script. This file must be placed in the /Library/Modem Scripts folder.

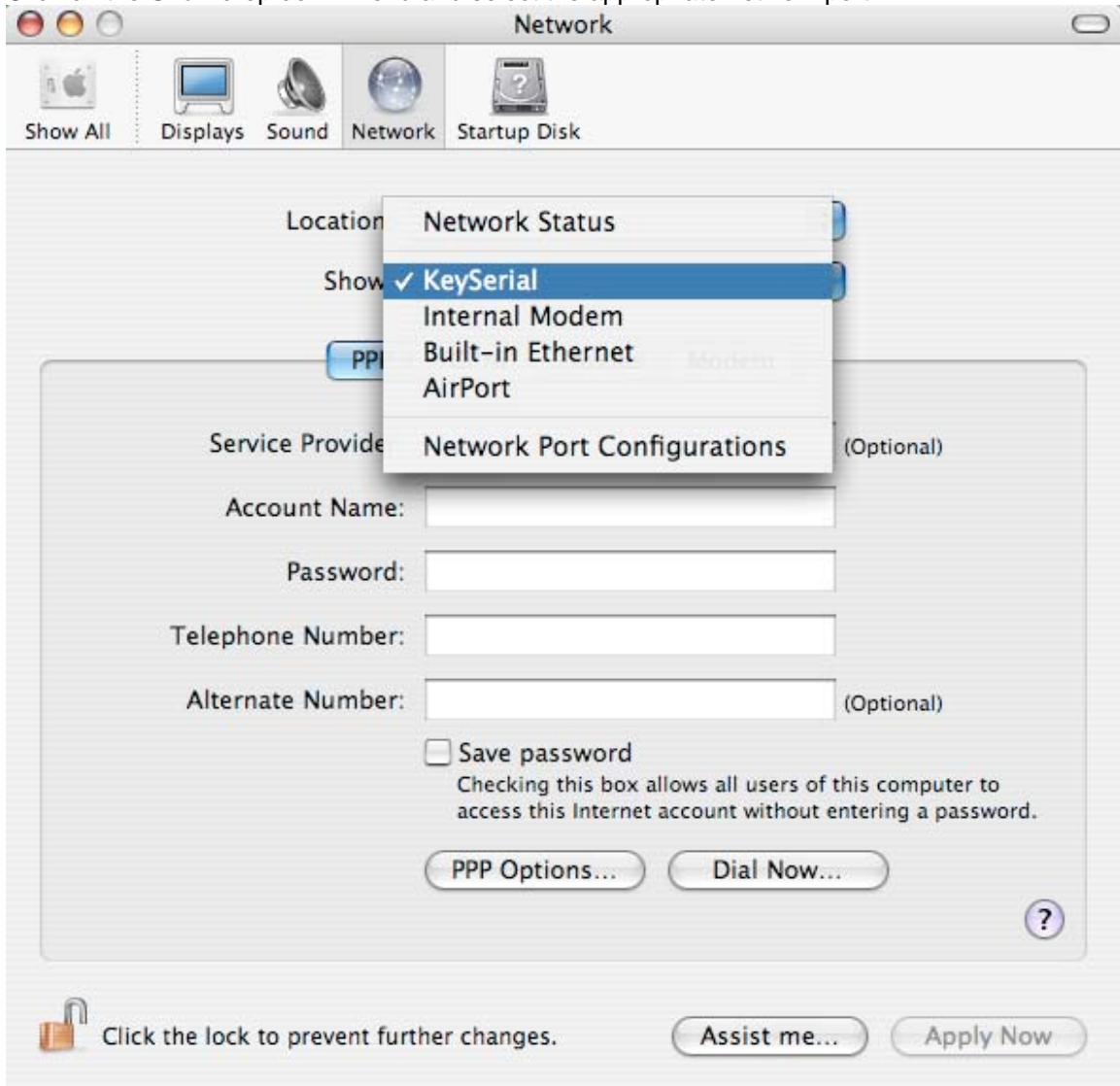
---

## 2.2 Network Setup

1. From the Apple Menu, select *System Preferences*.
2. Choose *Network*.



3. Click on the *Show* drop down menu and select the appropriate network port.



4. Click on the *PPP* tab.

5. On the PPP tab, enter in the following connection information:

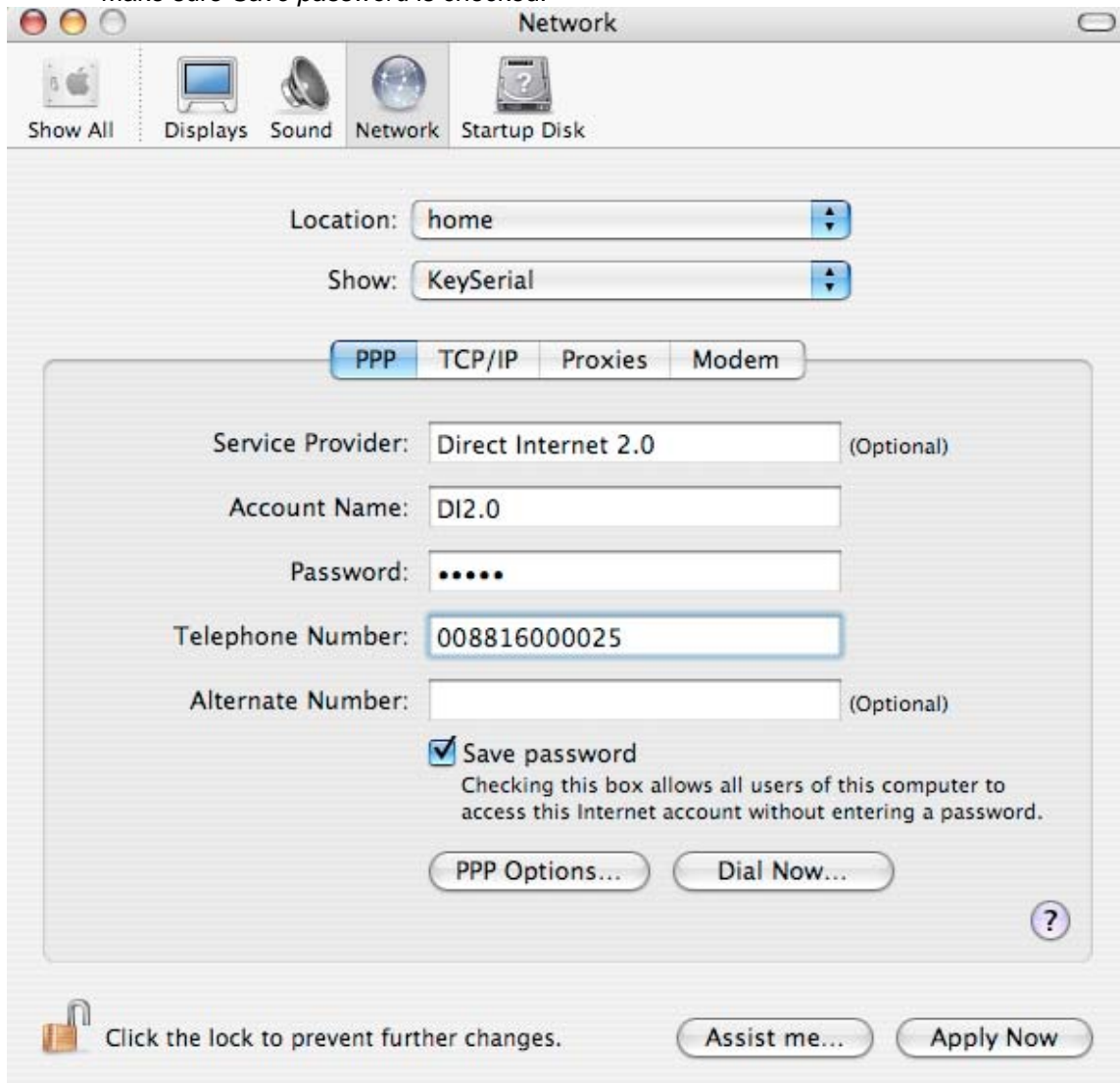
**Service Provider:** Direct Internet 2.0

**Account Name:** DI2.0

**Password:** DI2.0

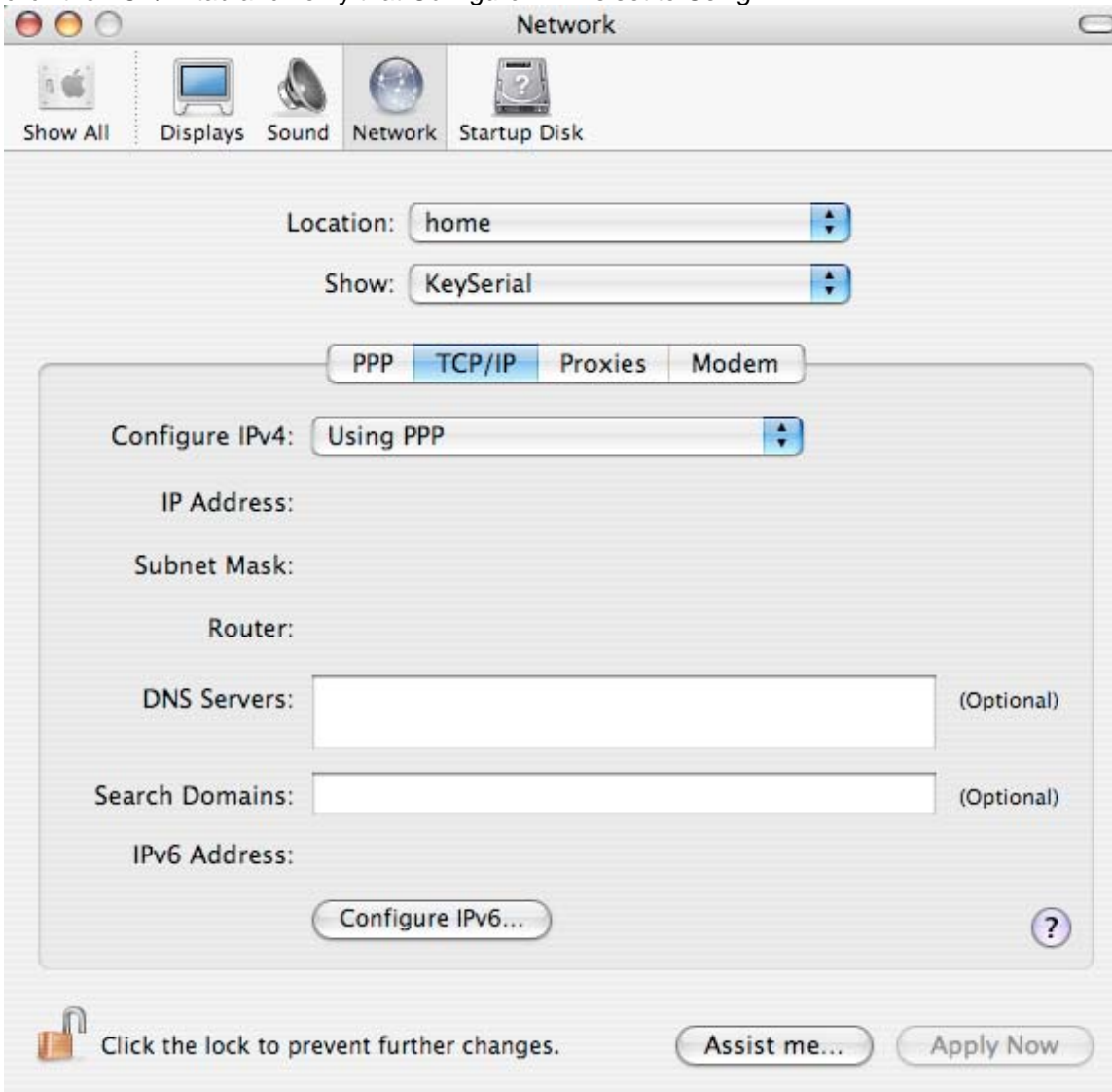
**Telephone Number:** 008816000025

Make sure *Save password* is checked.



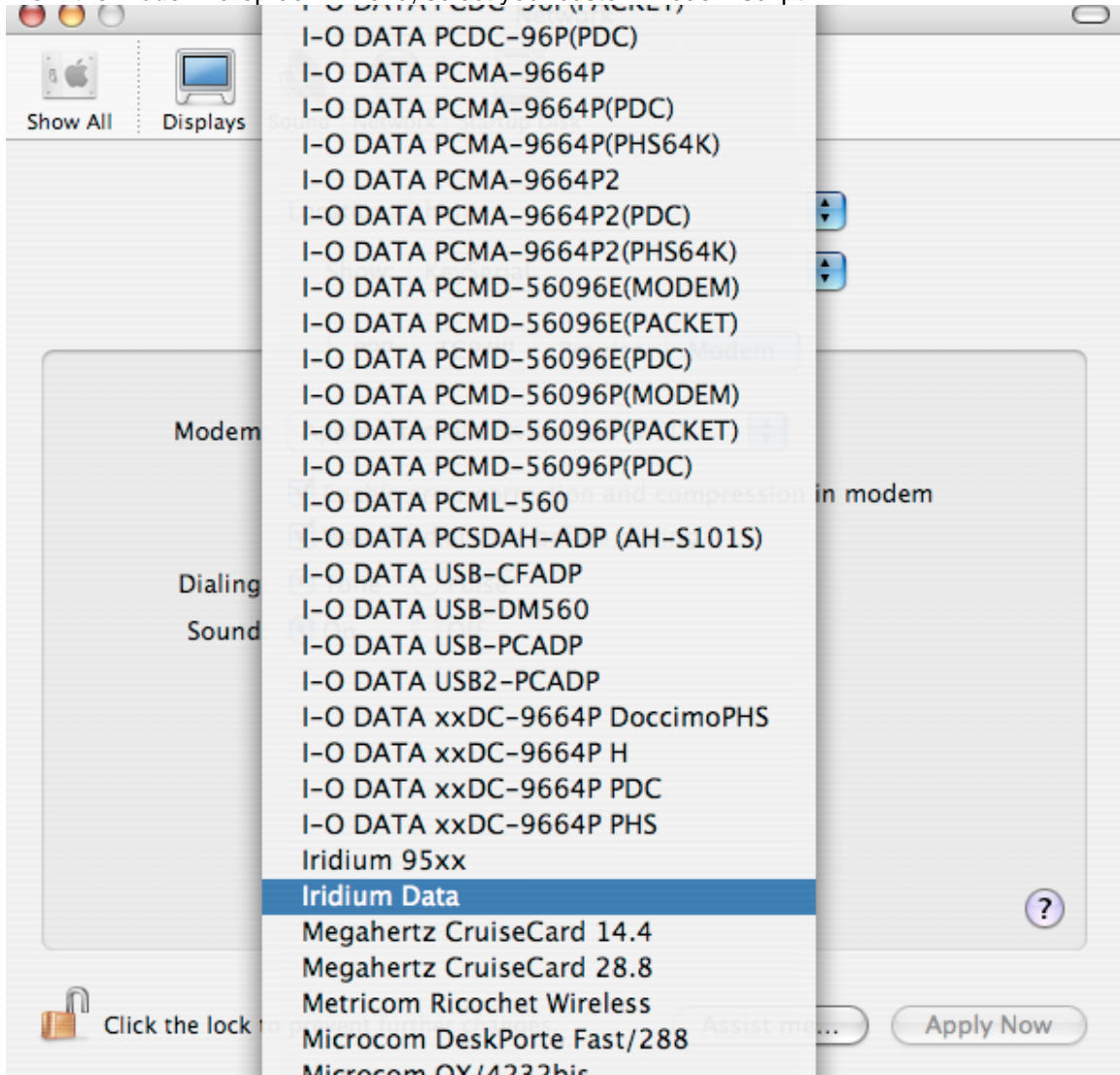
Note: Direct Internet 2.0 does not require a unique username/password to authenticate.

6. click the TCP/IP tab and verify that *Configure IPv4* is set to *Using PPP*.



7. Click on the *Modem* tab.

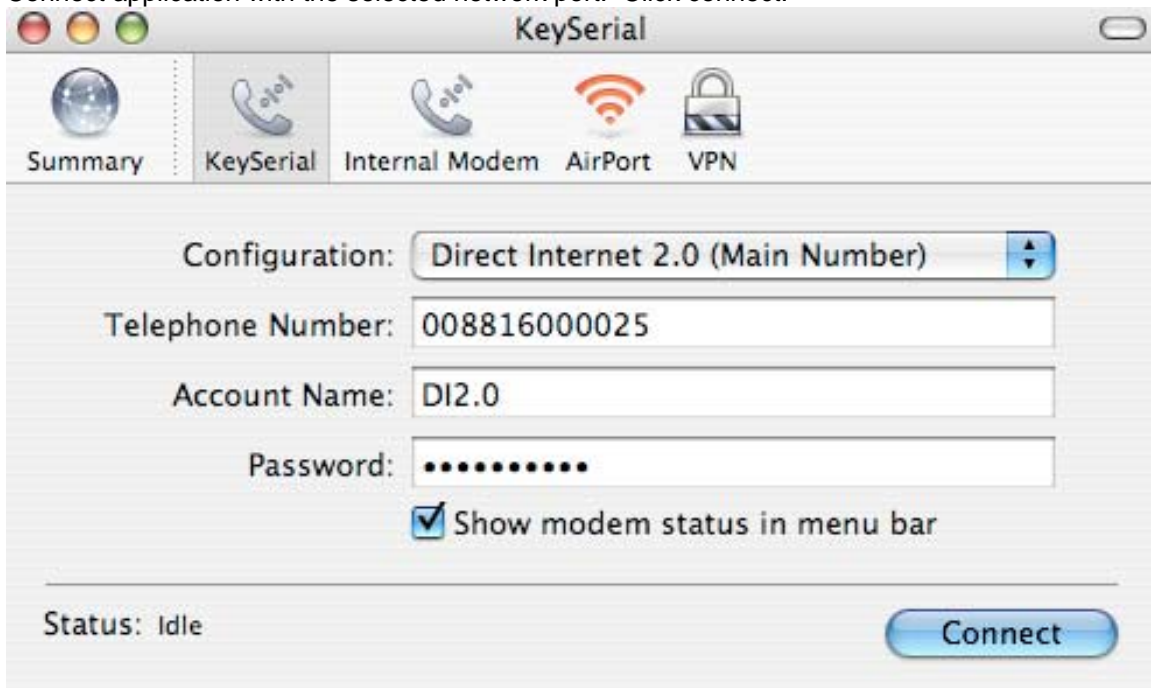
8. From the *Modem*: drop down menu, select your custom modem script.



9. Verify that *Show modem status in menu bar* is checked.

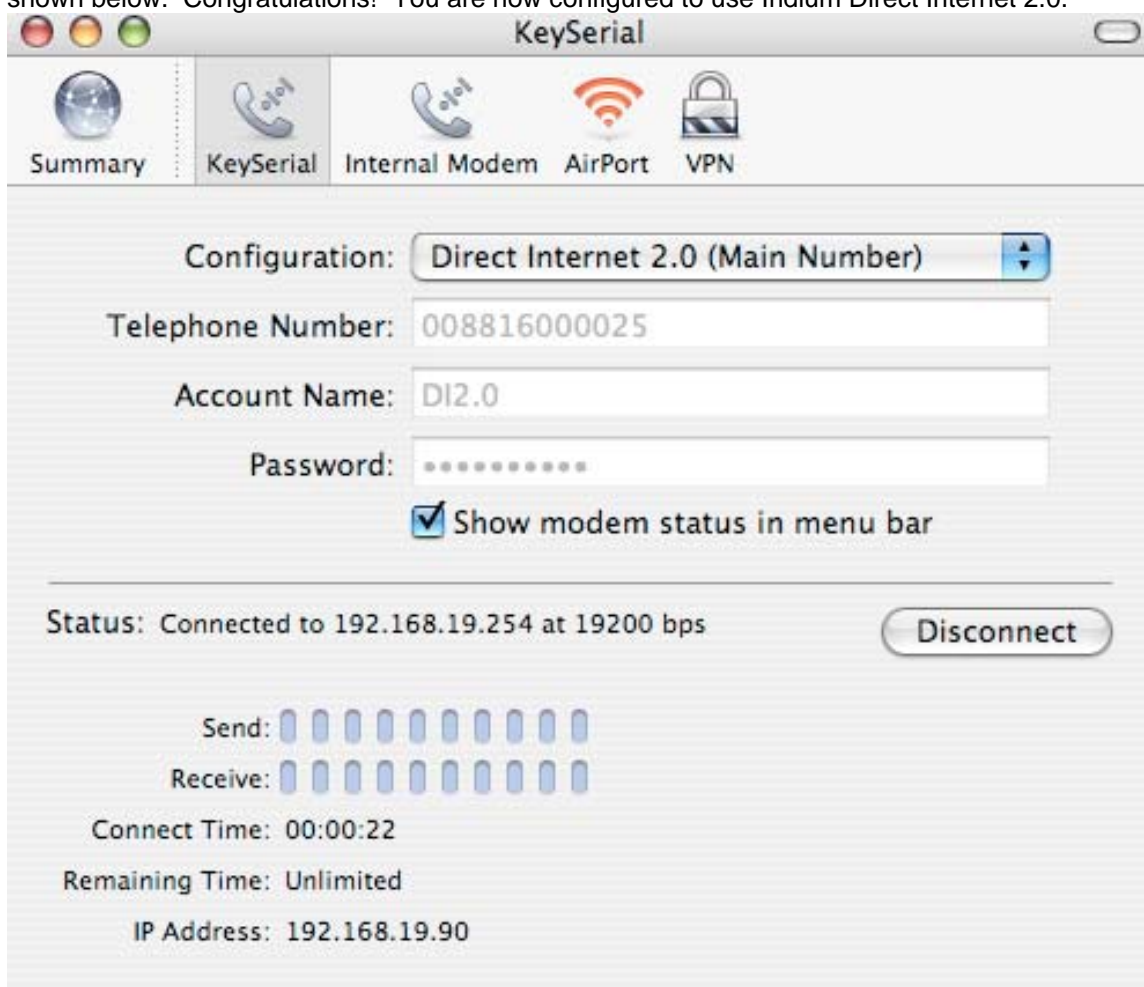
10. Click *Apply Now*.

11. From the PPP tab, you can now select *Dial Now...* to make a data call. This will launch the Internet Connect application with the selected network port. Click connect.





12. If you have successfully setup your connection, Internet Connect should return a connected status as shown below. Congratulations! You are now configured to use Iridium Direct Internet 2.0.



### 3 Dialing a Call

Below is a quick step by step walkthrough on how to make a call after setup has been completed.

1. Connect the computer and phone.
2. Orient the phone's antenna with a clear view of the sky.
3. If your computer is turned off, turn it on and wait for it to boot up.
4. Turn on your Iridium phone and wait for it to register with the satellite network.
5. If you checked the *Show modem status in menu bar* option during setup, you will now have an icon of a phone located on the menu bar.
6. Verify the correct network port is selected from the drop down and then click *connect*.

**Trademark Notice**

Iridium and the Iridium logo are registered trademarks and/or service marks of Iridium Satellite LLC.



**Remote Satellite Systems**  
1455 N. Dutton Ave., Ste. A, Santa Rosa, CA 95401  
(707) 545-8199 [www.remotesatellite.com](http://www.remotesatellite.com)